

# CHIP ROMANIA

Complex Higher-risk (and Indicated) Patients  
3<sup>rd</sup> Edition

Course directors: Marin Postu, Dan Deleanu, Dan Ioaneş

11-12 February 2022  
-ONLINE-

INTERNATIONAL  
FACULTY

WITH LIVE CASE  
TRANSMISSIONS 

from Kantonsspital Basel (Switzerland) & Emergency Institute for  
Cardiovascular Diseases "Prof. Dr. C.C.Iliescu" (Romania)



ROMANIAN SOCIETY  
OF CARDIOLOGY



## *The 3<sup>rd</sup> CHIP Romania online edition registered the next record figures:*



**611 participants registered**, MDs, specialists and resident doctors with the following medical specialities: Cardiology, Imaging, Radiology, Interventional Cardiology, Intensive Care Unit, Internal Medicine, Vascular Surgery etc



**4 live case transmissions from IUBCV “C.C.Iliescu”, Bucharest, Romania & Kantonsspital Basel, Switzerland**



**45 Romanian Faculty;**



**18 International Faculty;**



**8 Industry partners;**



**Virtual exhibition area** – virtual booths that allowed online meetings between participants and medical representatives.



***Event credited cu 9 CME credits by the Romanian College of Physicians.***

LIVE

11-12 February 2022

-ONLINE-

# CHIP ROMANIA

Complex Higher-risk (and Indicated) Patients  
3<sup>rd</sup> edition



**Operators: Gregor Leibungut, Alex Achim**

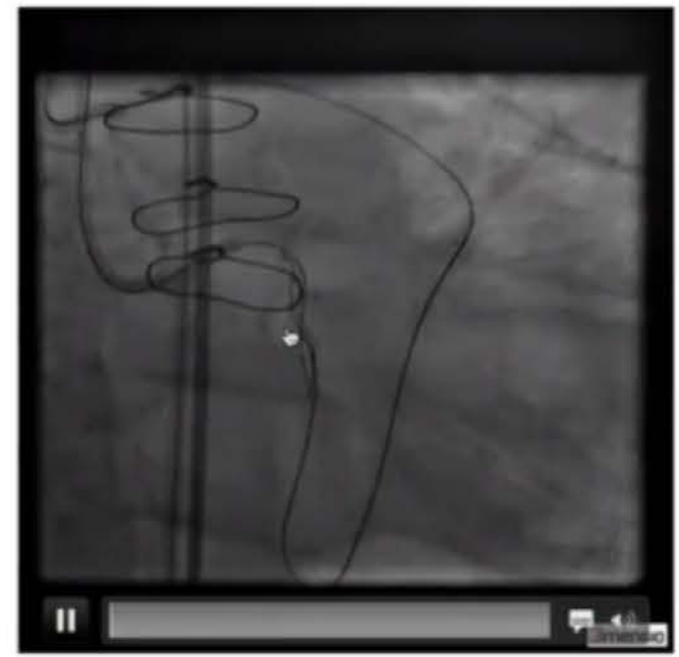
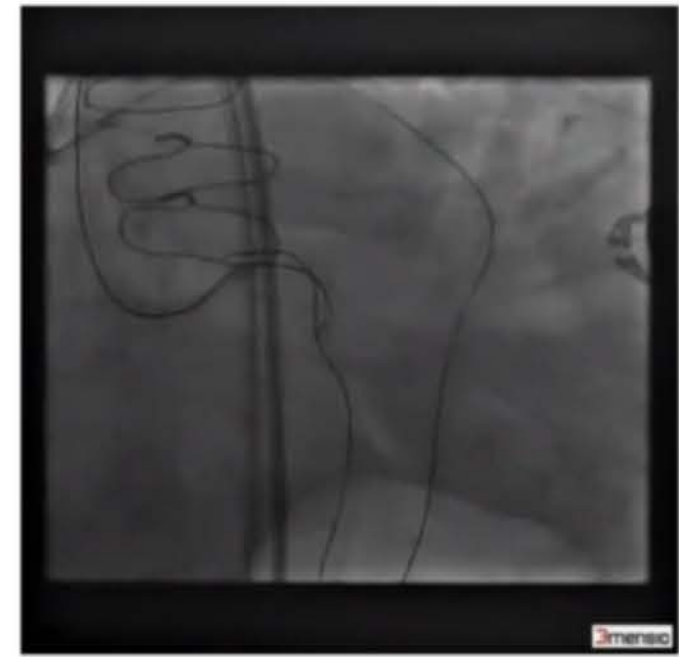
Live case transmission from Kantonsspital Basel, Switzerland

Event Management:



Sahlgrenska Universitetssjukhuset

# Case 1



Dan Ioaneș

# Why complex PCI? Dan Ioaneș (Sweden)

LIVE

11-12 February 2022

-ONLINE-

# CHIP ROMANIA

Complex Higher-risk (and Indicated) Patients  
3<sup>rd</sup> edition



LIVE, 2022  
A 530-2020  
\* 8/12/1969  
2/11/2022  
3:16:41 PM



Coronary Diagnostic  
cm 25  
LAO 8° / CAUD 8°

LIVE, 2022



84.4 kV FL  
236.8 mA 10.0 pis

**A**  
Coro CARE  
CLEARstent  
FL(-) Card

065.3 min  
2339 mGy  
27 mGy/min

24%

47:55

Review / Over

Home



● LIVE

11-12 February 2022

-ONLINE-

**CHIP ROMANIA**  
Complex Higher-risk (and Indicated) Patients  
3<sup>rd</sup> edition



**CHIP ROMANIA**  
Complex Higher-risk (and Indicated) Patients  
3<sup>rd</sup> Edition

11-12 February  
2022  
- ONLINE -



## What is our experience with CTO PCI?

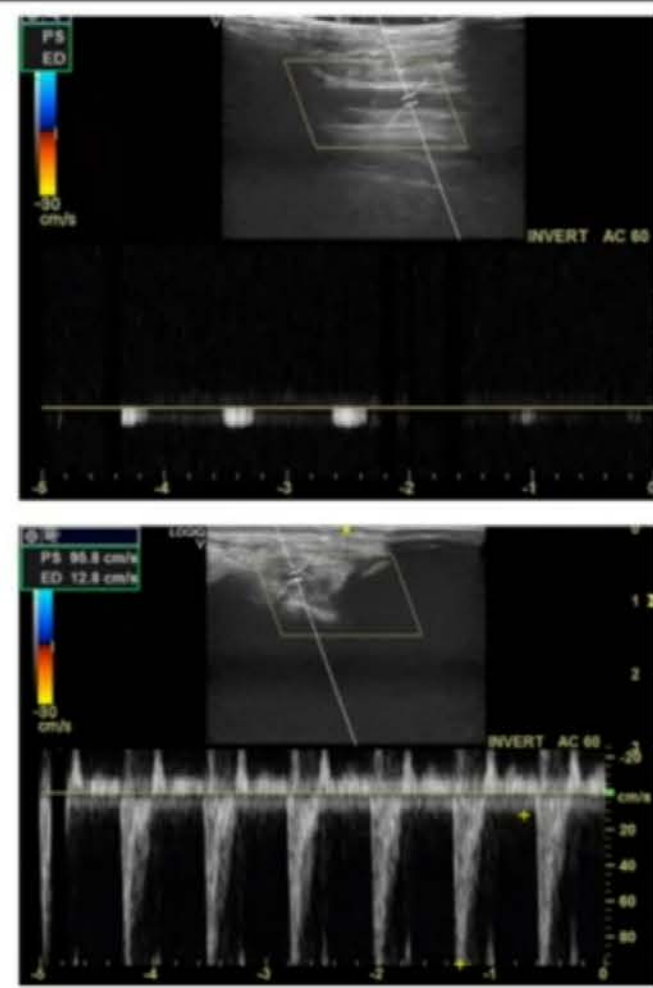
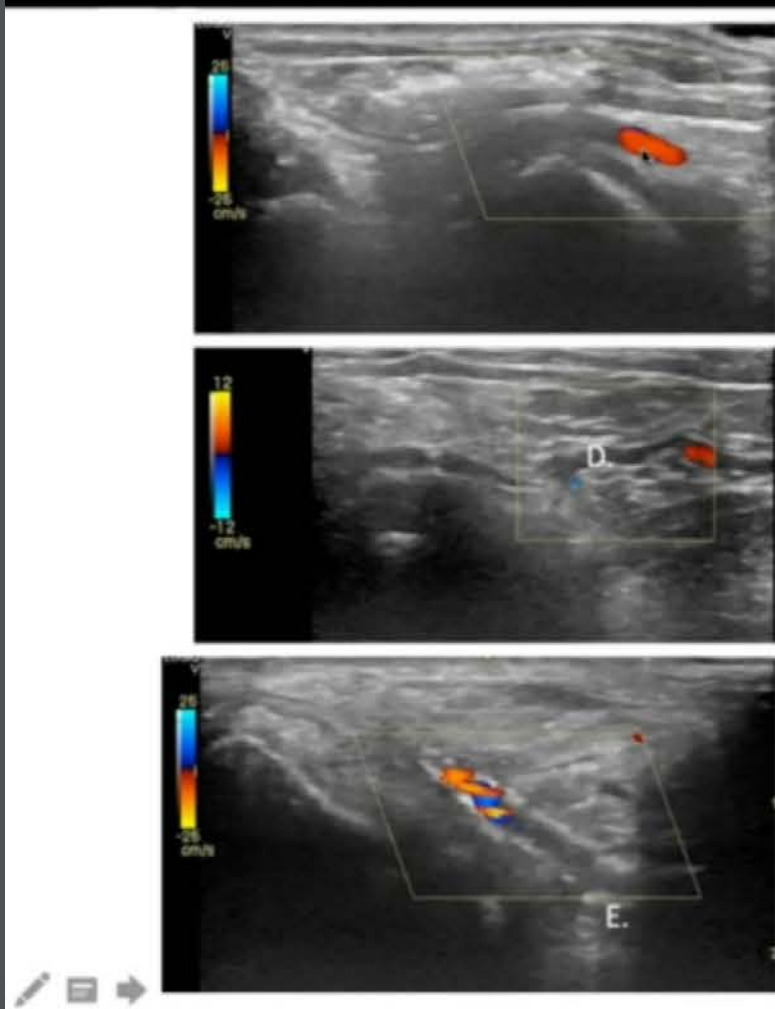
- Books
- Courses- TOBI, MLCTO, PCR, TCT, CTO-Connect, EPIC SEC, JIM vascular
- Online: ctofundamentals.com; incathlab.com; live cases and presentations from PCR online, TCTMD, TCTAP, Swiss CTO
- Update our CTO cart (we increased our Asahi, Terumo and Abbott gear + Icoils, BSC tools, Teleflex tools)
- IVUS, Rota, Shockwave
- .....2020 Covid = no more proctoring, only STEMI + NonSTEMI



Mihnea Nechita

Event Management:





Zoltan Ruzsa

LIVE

11-12 February 2022  
-ONLINE-

# CHIP ROMANIA

Complex Higher-risk (and Indicated) Patients  
3<sup>rd</sup> edition



sonar CORO 1

01:28:41

STREAM

82.8 KV  
238.0 mA  
A  
Dr. Coro  
Dr. Clear Sterk  
Dr. FL Card  
I 014.7 min  
004 mGy  
34 mGy/min  
03:27  
Reflectare  
V10 x 090  
V10 750  
V10 1000

10:01

11:08



Claudiu Ungureanu



LIVE

11-12 February 2022

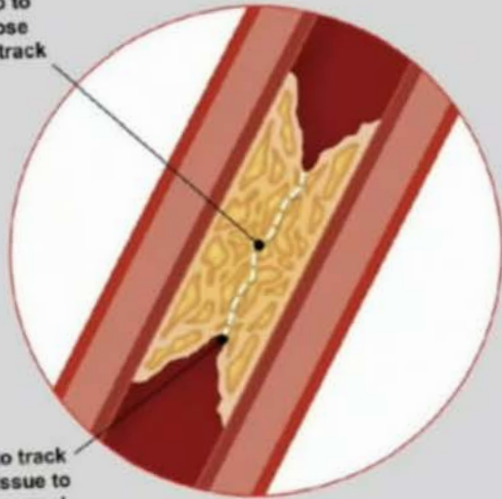
-ONLINE-

**CHIP ROMANIA**  
Complex Higher-risk (and Indicated) Patients  
3<sup>rd</sup> edition



## Antegrade wire strategies - Tapered proximal cap

Wire tip to find loose tissue track



Wire to track soft tissue to distal vessel

### Required Wire Properties



Tapered 0.010" Tip  
+ Polymer Jacket



Low  
Tip load



1:1 Torque  
Response

**XTA / XTR / Fighter / Whisper**



J. Spratt CTO Summit NY 2017



Gregor Leibungut



**Lucian Călmăc**



-ONLINE-

Complex Higher-risk (and Indicated) Patients  
3<sup>rd</sup> edition



We invite you to ask questions in the app section b



**Dejan Milasinovic**



**Elvin Kedhi**

11-12 February 2022  
-ONLINE-  
**CHIP ROMANIA**  
Complex Higher-risk (and Indicated) Patients  
3<sup>rd</sup> edition

E-CHIP Romania, February 11-12, 2022

Dejan Milasinovic

### Full physiology assessment: future directions

Dejan Milasinovic  
University Clinical Center of Serbia and Faculty of Medicine University of Belgrade

UNIVERSITY OF BELGRADE  
FACULTY OF  
MEDICINE

Event Management  
**MM** symposium organized with the support of Abbott company

11-12 February 2022  
-ONLINE-  
**CHIP ROMANIA**  
Complex Higher-risk (and Indicated) Patients  
3<sup>rd</sup> edition

### DM subgroup analysis of PROSPECT Trial Impact of NCL and/or TCFA on MACE

**Diabetes Mellitus**  
\* No Diabetes Mellitus

**DM & TCFA vs DM & NoTCFA HR MACE=3.6**  
**NoDM & TCFA vs NoDM & NoTCFA HR =2.4**

*E. Kedhi & G.W. Stone, JACC Cardiovasc Imaging, 2017;10:451-8*

COMBINE  
isals  
sum  
TCT CONNECT

Elvin Kedhi

Event Management  
**MM** symposium organized with the support of Abbott company



LIVE

11-12 February 2022

-ONLINE-

CHIP ROMANIA

Complex Higher-risk (and Indicated) Patients

3<sup>rd</sup> edition



Event Management:



“Live in a box” case 2 – Marin Postu (Romania),

# CHIP ROMANIA

Complex Higher-risk (and Indicated) Patients  
3<sup>rd</sup> Edition



ROMANIAN SOCIETY  
OF CARDIOLOGY



INTERNATIONAL  
FACULTY

Course directors: Marin Postu, Dan Deleanu, Dan Ioaneș

11-12 February 2022 -ONLINE-

## Event organized with the support of:



Alpha Medical

